



Bury And Bolton Road | Manchester





Bury And Bolton Road | Manchester



- Executive New Home
- Five Bedrooms
- Open Plan Modern Layout
 - Gated Development
- Atrium Design
- Sought After Location



Spence Close is a Luxurious gated development of 5 executive homes that will be built to exacting standards.





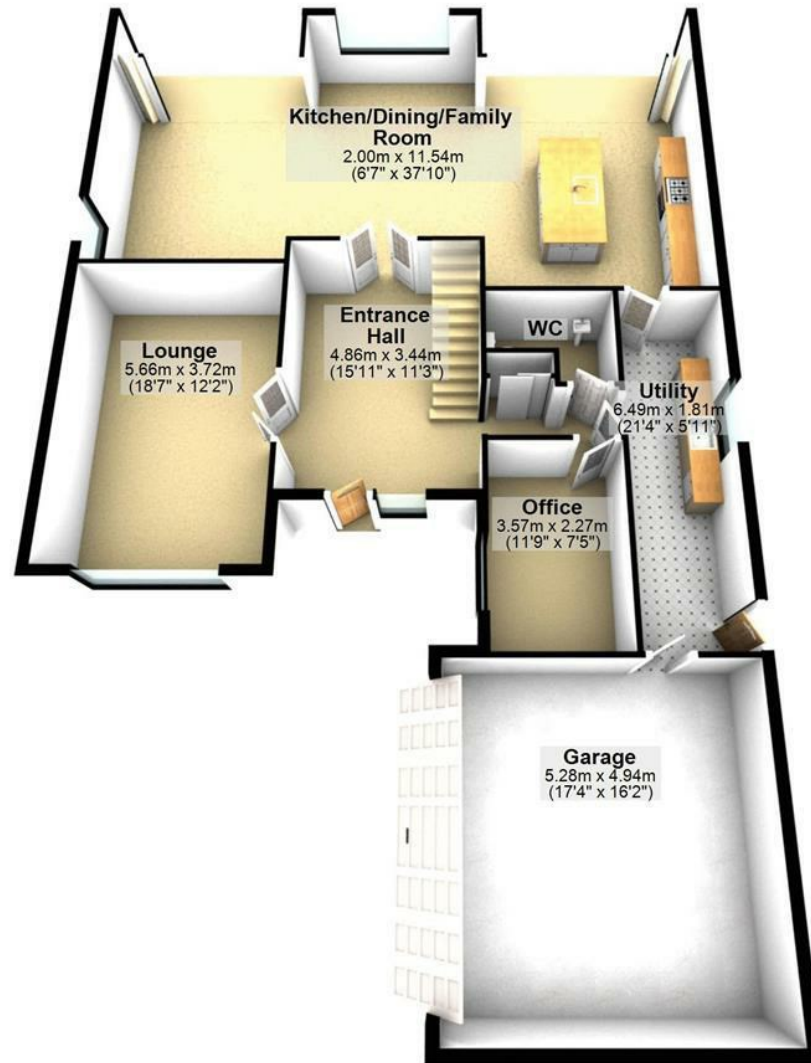
The property is a five bedroom detached home with superb accommodation comprising of three reception rooms, five bedrooms and three bathrooms with a double garage and driveway parking. The centre of this immaculately presented family home is the entrance atrium from which all the accommodation can be accessed. The kitchen design is something you would expect in a home of the stature with a large centre island open plan family space and snug enjoying garden views through the Bi Fold doors. A large separate lounge for more formal occasions can be found also a utility room, home office and wc. The first floor layout centres the atrium with a luxurious master bedroom suite with impressive en-suite facilities with bedroom two also includes an en-suite shower room, whilst the large impeccable family bathroom suite serves the three remaining bedrooms.

Externally the property benefits from landscaped gardens. The parking is ample with driveway parking leading to a double garage. The property is located central for Bury and Bolton centre amenities and the well renowned Bury Grammar School is within a short commute. A comprehensive road network system can be reached within minutes, with key roads bringing Liverpool, Manchester, north Wales and the Midlands within commutable distance. Likewise, there are excellent rail links and metro services, while Manchester and Liverpool International Airports are within an hours' drive.

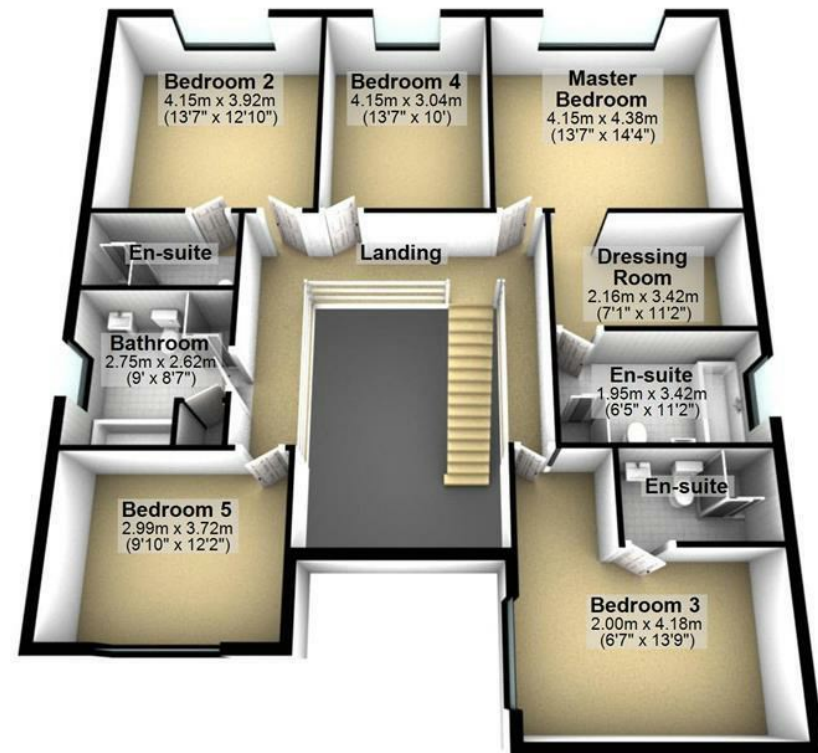
Benefiting from 10-year warranty early viewings are advised.



Ground Floor



First Floor



Bury And Bolton Road
Manchester
M26 4LA

: £699,950
Tenure: Leasehold
Local Authority:
EPC Rating:



IMPORTANT NOTICE: Maison Haus Limited, their solicitors and any joint agents give notice that: 1. They are not authorised to make or give any representations or warranties in relation to the property either here or elsewhere, either on their own behalf or on behalf of their client or otherwise. They assume no responsibility for any statement that may be made in these particulars. These particulars to not form part of any offer or contract and must not be relied upon as statements or representation of fact. 2. Any areas, measurements or distances are approximate. The text, photographs and plans are for guidance only and are not necessarily comprehensive. It should not be assumed that the property has all necessary planning, building regulations or other consents and Maison Haus Limited have not tested any services, equipment or facilities. Purchasers must satisfy themselves by inspection or otherwise.



Mill Lane, Alderley Edge, Cheshire SK9 7TY
moving@maison.haus
01625 919 079